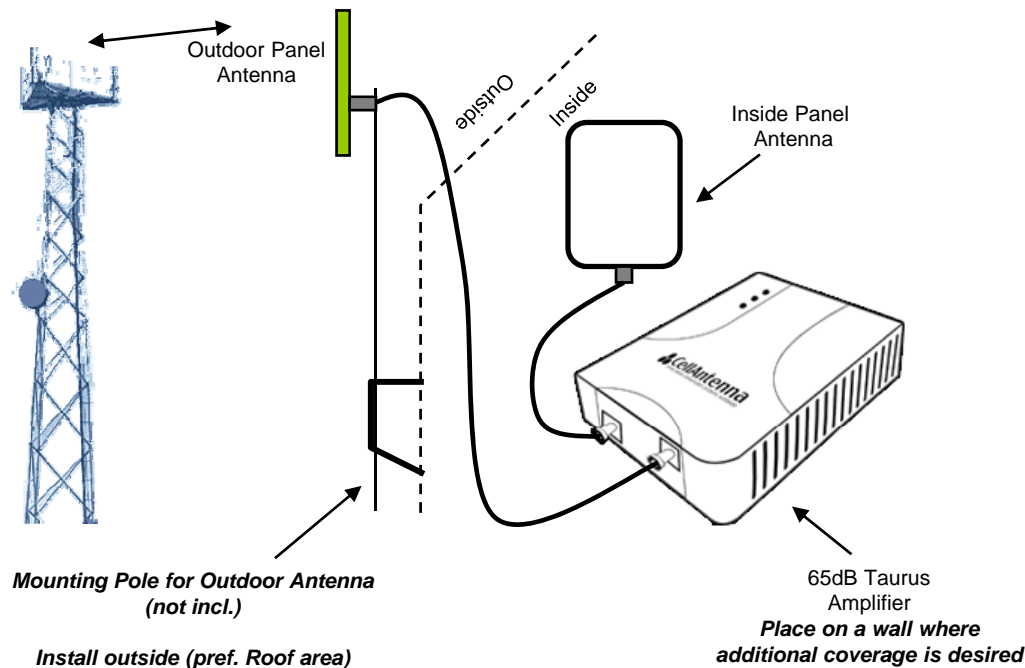


## CAE65-TAURUS - PCS Repeater System



### A. Parts List

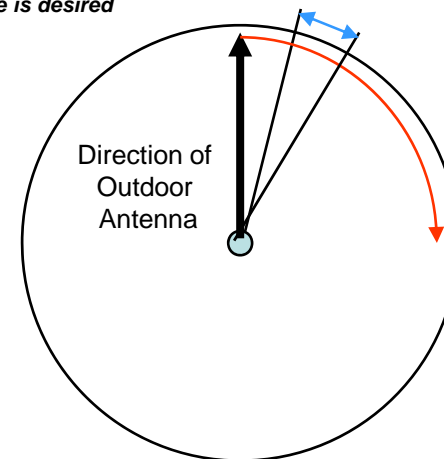
- (1) FCC licensed 65dB In-Building Amplifier with wall pack DC power supply
- (1) Indoor panel antenna which directly connects to amplifier
- (1) CA-P2000 directional rooftop donor panel antenna
- (1) 50 feet of LMR 400 low loss cable (N male –SMA male connectors)
- Installation Instructions

[www.cellantenna.com](http://www.cellantenna.com)

### B. Instructions

1. Place the external panel antenna outside – preferably on rooftop (see instructions on the box)
2. Run the 50 feet of cable from the outdoor panel antenna to the amplifier (Connect outside panel antenna cable connector to **Base** or **Outdoor** side / attach indoor antenna to **Mobile** or **Indoor** side).
3. Place the amplifier inside residence/business (in desired area of coverage).
4. Connect wall mounted transformer in wall outlet and the other end to the DC-IN connector, thus turning on the amplifier.
5. In order to get the best performance of this system you will need to get the outside panel antenna aimed at the cell site of your PCS provider (not necessarily the closest to you – or even visible).

**See illustration below for detailed antenna aiming instructions**



Move in 1 inch increments (wait 20-30 seconds) and see how the signal improves inside – stand about 6 feet away from indoor antenna. If there is no improvement, move the outdoor antenna another inch in rotation (wait another 20-30 seconds) before moving again if needed.

Continue rotating the outdoor antenna until maximum signal is obtained indoors, then tighten outdoor antenna and you are done.