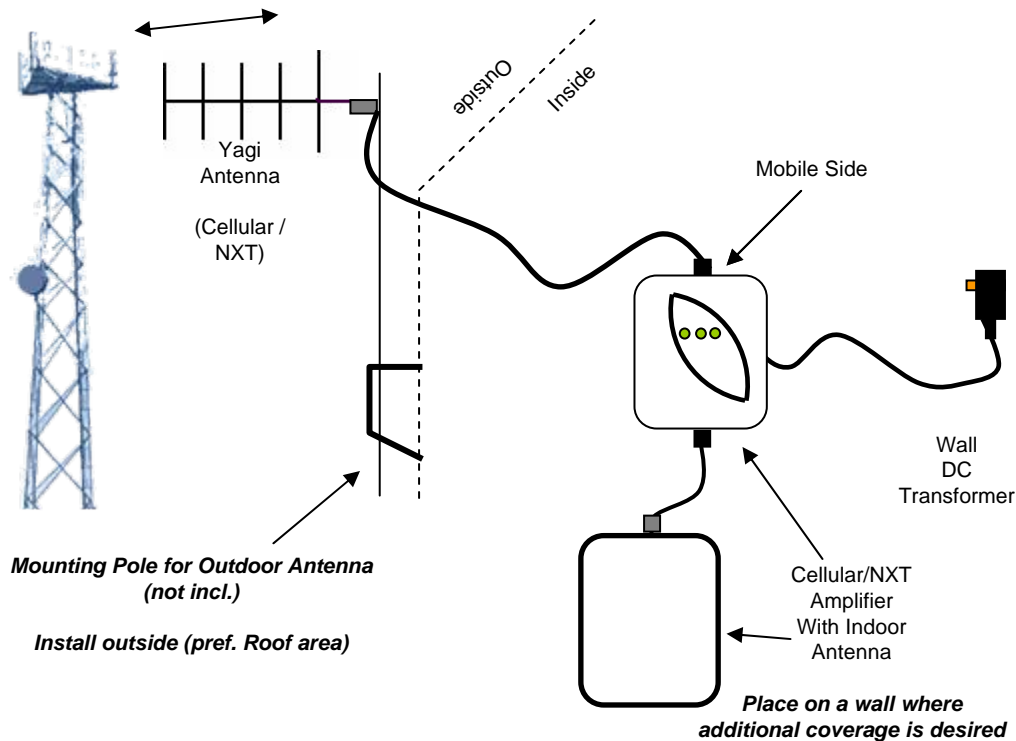


CAE50 CEL/NXT SOHO Repeater System



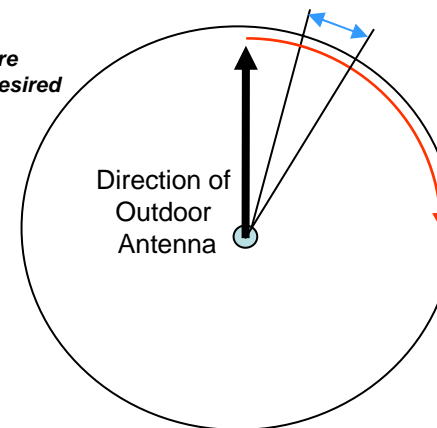
A. Parts List

- (1) 50 dB FCC approved Amplifier with wall pack DC power supply
- (1) Outdoor High gain Yagi antenna
- (1) 33 feet of low loss cable complete with connectors already attached. One end is a TNC connector to the external antenna and the other end is an SMA connector for the amplifier
- (1) Indoor dual band panel antenna

B. Instructions

1. Place the external yagi antenna outside – preferably on rooftop (see instructions on the box)
2. Run the 33 feet of cable from the outdoor yagi antenna to the amplifier (Connect outside antenna cable connector to **Base** or **Outdoor** side / attach indoor antenna to **Mobile** or **Indoor** side).
3. Place the amplifier inside residence/business (in desired area of coverage).
4. Connect wall mounted transformer in wall outlet and the other end to the DC-IN connector, thus turning on the amplifier.
5. In order to get the best performance of this system you will need to get the outside Yagi antenna aimed at the cell site of your Cellular/NXT provider (not necessarily the closest to you – or even visible).

See illustration below for detailed antenna aiming instructions



Move in 1 inch increments (wait 20-30 seconds) and see how the signal improves inside – stand about 6 feet away from indoor antenna. If there is no improvement, move the outdoor antenna another inch in rotation (wait another 20-30 seconds) before moving again if needed.

Continue rotating the outdoor antenna until maximum signal is obtained indoors, then tighten outdoor antenna and you are done.