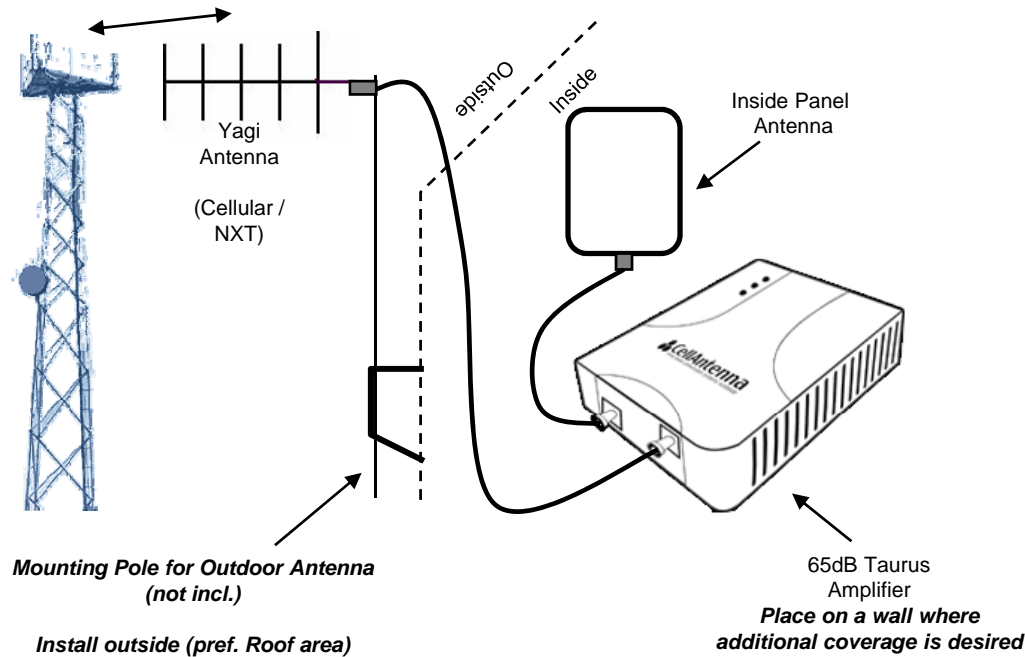


CAE65-TAURUS NXT/CEL Repeater System



A. Parts List

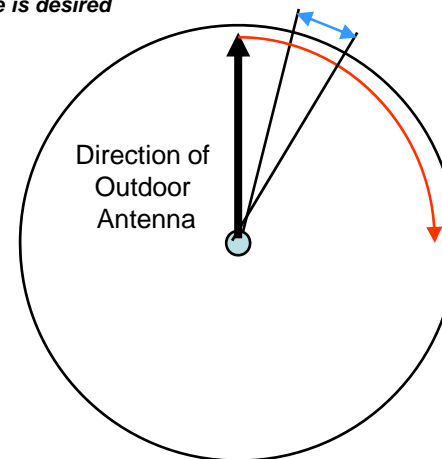
- (1) FCC licensed 65dB In-Building Amplifier with wall pack DC power supply
- (1) Indoor panel antenna which directly connects to amplifier
- (1) Outdoor high gain yagi antenna
- (1) 50 feet of LMR 400 low loss cable (N male –SMA male connectors)
- Installation Instructions

www.cellantenna.com

B. Instructions

1. Place the external yagi antenna outside – preferably on rooftop (see instructions on the box)
2. Run the 50 feet of LMR400 cable from the outdoor yagi antenna to the amplifier (Connect outside antenna cable connector to **Base** or **Outdoor** side / attach indoor antenna to **Mobile** or **Indoor** side).
3. Place the amplifier inside residence/business (in desired area of coverage).
4. Connect wall mounted transformer in wall outlet and the other end to the DC-IN connector, thus turning on the amplifier.
5. In order to get the best performance of this system you will need to get the outside Yagi antenna aimed at the cell site of your Cellular/NXT provider (not necessarily the closest to you – or even visible).

See illustration below for detailed antenna aiming instructions



Move in 1 inch increments (wait 20-30 seconds) and see how the signal improves inside – stand about 6 feet away from indoor antenna. If there is no improvement, move the outdoor antenna another inch in rotation (wait another 20-30 seconds) before moving again if needed.

Continue rotating the outdoor antenna until maximum signal is obtained indoors, then tighten outdoor antenna and you are done.